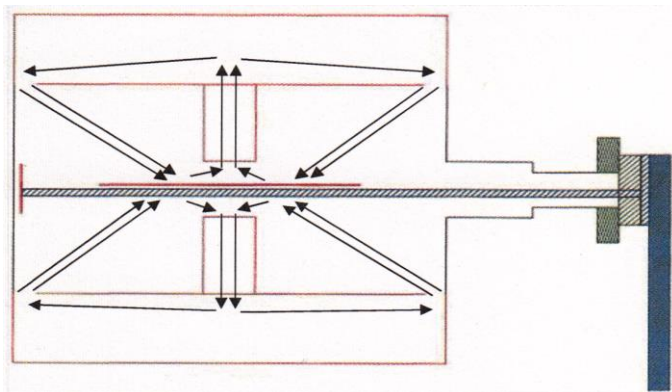


## Laboratory Oven M13-500



**Pict. 1: Accu Fast Sytem. The arrows shows the air-flow inside the oven.**

### **Our new and improved model!**

- Only 12 kW heat effect instead of 18 kW and with better test results. Energyefficient in comparison.
- More accurate sample results
- Ergonomic and servicefriendly construction

### **What To Expect From XISCION**

- Easy maintenance
- Superior ergonomics
- Strong support and service setup

### **Auto Load System**

The oven gives total control of the full heatings process of the sample:

- Repetitive process to change samples
- Safe and fast handling for the operator
- Superior ergonomics

### **Accu Fast System**

Applicating the heat to the sample:

- Frequency converter for control of the air-flow
  - Upper and lower heat is focused on the sample
  - Efficient ventilation of fumes from the sample
- (See Picture 1)

### **Ultra Heat System**

The oven is fast - with high heat capacity:

500° C max temp

- Extra insulation with high quality refractory material
- Efficient sealing system

### **Ventilation, testsheet-cooling and servicedoor**

To control the ventilation and get rid of gases there is a frequency controlled exhaust fan. A servicedoor is placed on the back of the oven.

### **Operating the oven**

Set required time, temperature and air-flow speed.

Put the sample on the shuttle and press start.

The sample will be fed in to the oven, and the curing process starts. When the setted time has expired the sample comes out automatically.

#### **Address:**

Tryckluftsteknik i Westervik AB  
Kolonivägen 5  
S-593 61 VÄSTERVIK  
Sweden

#### **Telephone:**

+46 490 37160

#### **Telefax:**

+46 490 37175

#### **E-mail:**

[info@xiscion.com](mailto:info@xiscion.com)

#### **Internet:**

[www.xiscion.com](http://www.xiscion.com)

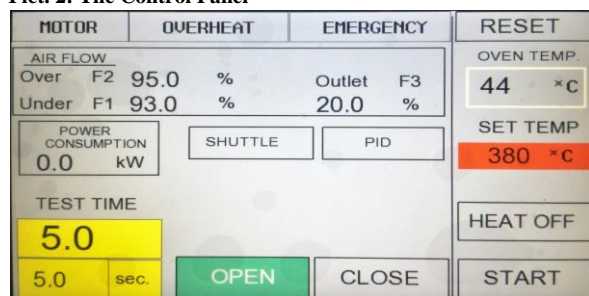
## Laboratory Oven M13-500

### Product range

|                | Xiscion LABORATORY OVEN<br>EC Standard   | LABORATORY OVEN<br>500  |
|----------------|--|---|
| Specifications | Auto Load System<br>Accu Fast System<br>Ultra Heat System<br>Effect<br>Max temperature<br>Heat-up time until stabile<br>Fan motors, upper- & lower heat, vent.<br>Compressed air | Standard<br>Standard<br>Standard<br>12 kW<br>500° C<br>60 min<br>0,18 Kw<br>6 - 8 bar |
| Options        | Water cooling box (W)<br>Water cooling box - Auto dip (WD)<br>IR-Sensor  | Option (see below)<br>Option (see below)<br>Option (see below)                        |
| Design         | Finish<br>Size (mm) length x width x depth<br>Weight (kg)  | Stainless Steel<br>1920 x 800 x 860 (with<br>waterbox depth app. 1100)<br>280 kg      |

Separate frequency converters to control the air-flow for upper heat, lower heat and ventilation. Thermocouples to measure upper heat, lower heat and for overheat protection. The temperature regulator is controlled by the PLC.

Pict. 2: The Control Panel



The oven is PLC-operated with a detailed control panel. Easy to operate with touch-buttons. (See Pict. 2)

### Options

#### Water cooling box (W)



Box of stainless steel for cooling water

#### Water cooling box with auto dip-function (WD)



The box of stainless steel with automatic dip-function of the hot sample into the water cooling box.

#### IR-sensor (IR)



Measures directly on the sample and finishes test automatically when the right temp has been reached.

#### Address:

Tryckluftsteknik i Westervik AB  
 Kolonivägen 5  
 S-593 61 VÄSTERVIK  
 Sweden

#### Telephone:

+46 490 37160  
**Telefax:**  
 +46 490 37175

#### E-mail:

[info@xiscion.com](mailto:info@xiscion.com)

#### Internet:

[www.xiscion.com](http://www.xiscion.com)